



1106/8 Spring Street Bondi Junction NSW

2 2 2

Set back from the street in the renowned 'Parksun Apartments', this well-presented home provides a quiet oasis just footsteps from all the conveniences that Bondi Junction has to offer. Its elevated position showcases expansive views across the treetops of Centennial Parklands towards Botany Bay, while capturing fresh breezes and stunning sunsets.

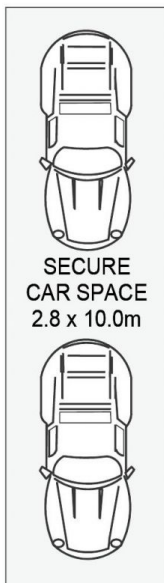
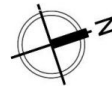
Located just moments from the Junction's Westfield, Eastgate and city-bound trains and buses, this is a perfect option for downsizers, investors or first-home buyers looking to enter the desirable Eastern Suburbs market.

- Modern gas kitchen with breakfast nook and ample storage
- Granite benchtops & splashbacks
- Two bedrooms with BIRs, master with ensuite

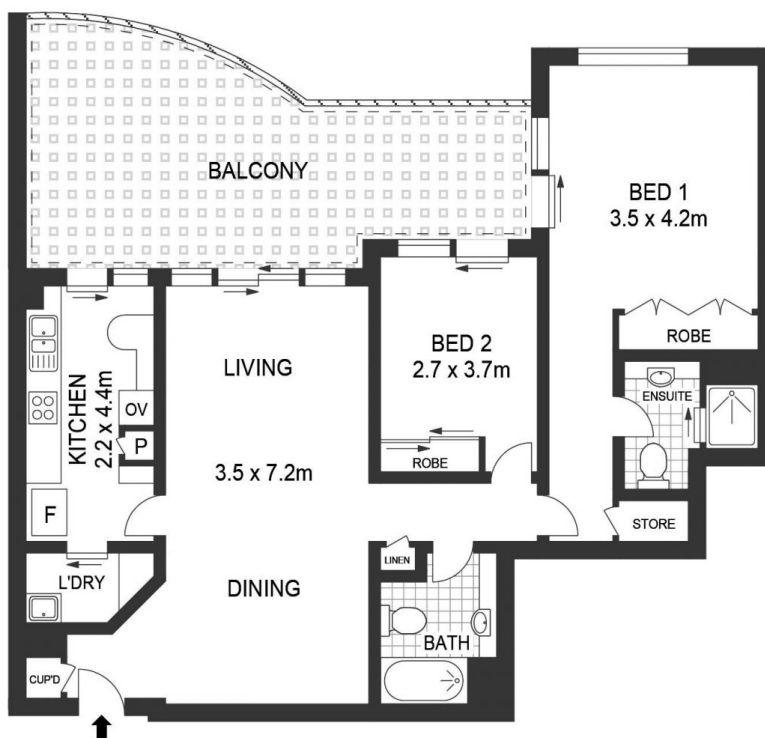
View : <https://www.investrealty.com.au/7783492>



Stan Farbman
0414 864 525



LEVEL FOUR



LEVEL ELEVEN

1106/8 Spring Street

Bondi Junction

Scale in metres.
Indicative only. all information contained herein is obtained from sources we believe to be accurate.
We cannot guarantee it's accuracy. Interested persons should make their own enquiries.